

# Imperial Band Instrument Mfg. Co.

Williamsport, PA

1922 The Imperial Band Instrument Mfg. Co. is incorporated August 28<sup>th</sup> and purchased the former Villinger Mfg. Co. plant at #643 Elmira St. in Williamsport (top photo) (Villinger did lathe & plating) (*MTR*, Sept).

**Charles W. Mink:** (1887-1946) president; Born in Russia and came to the US in 1888. Naturalized in 1914. Listed as president of a wood pipe company in 1930 and by 1940 is a private attorney.

**Felice N. Galetti:** (1867-?) vice-president; Born in Italy and came to the US in 1886. Naturalized in 1899. Listed as tool maker and machinist. Brua Keefer signed his 1914 passport application saying that he knew him for 25 years which matches with the 1922 announcement that he had been a band instrument maker since 1888.

**Harry A. Fischer:** (1879-1959) secretary; Cornet player, salesman for Imperial, and former band instrument tester for US government.

**George L. Reeder:** (1878-1938) treasurer; Sales manager in 1920 and bank secretary in 1930 so left by then.

1926 “The Charles W. Noll Co. has been organized to take over the eastern representation as a branch factory for the William Frank Co.. Charles Noll, formerly head of the Imperial Band Instrument Co., Williamsport, PA, is president of the new company.” (*MTR*, Sept. 13) [Charles Noll (1890-1975) is listed as a machinist in 1918 and 1920 then a music teacher in 1930 so he would have a good background for this but I have not found a connection to Imperial. The article writer could be mistaken with Charles Mink or else the original 1922 article should be Noll instead of Mink as president. By 1942, Noll was a newspaper distributor.]

1926 Imperial moves to #3 Maynard St., S. Williamsport.

1930 Imperial Band Instrument Co. is listed.

1935 Imperial closes business.

Brass instruments sometimes are the “Gold Tone” model.  
Trumpet serial numbers go at least into the 800s and often have a threaded tuning slide rod. Horn-u-copia photos this page.



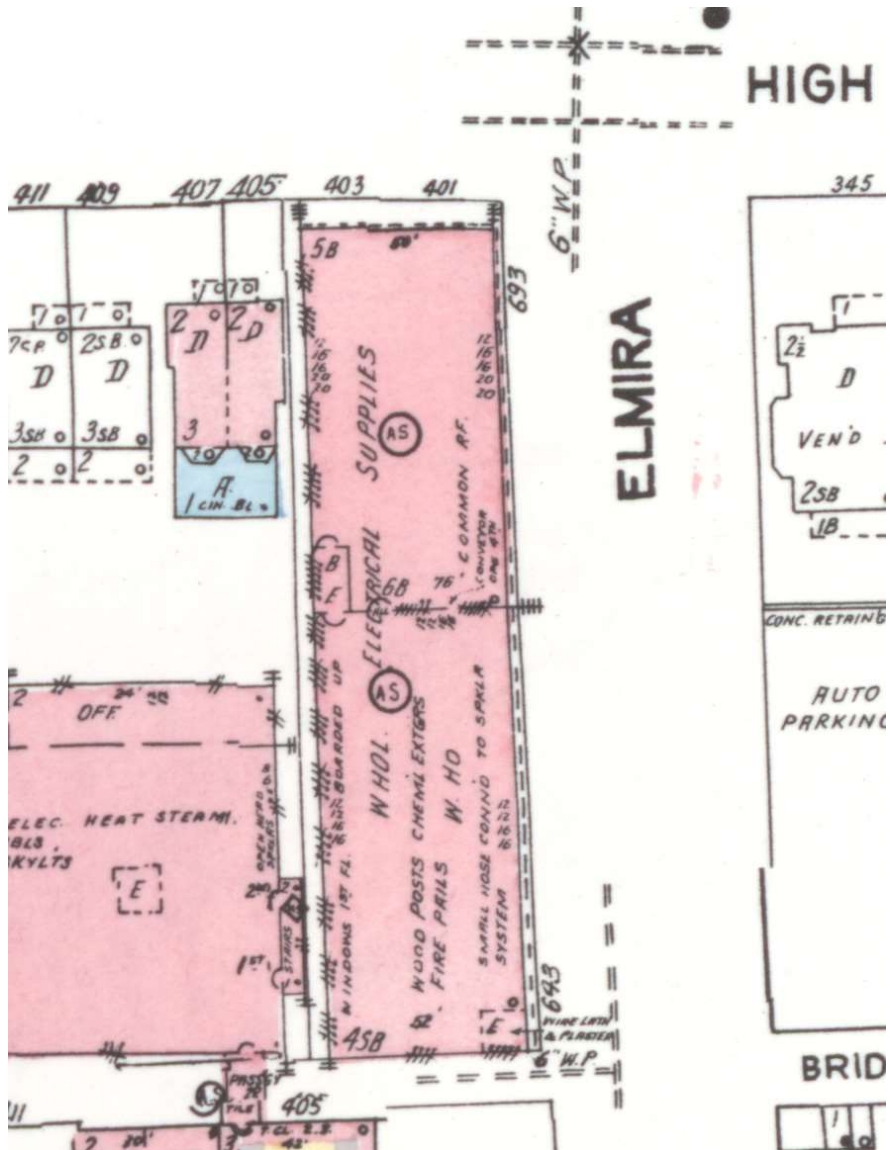
Imperial trumpet #265 c.1925 (auction photos)



Imperial Baritone #616, c.1928 (auction photos)



643 Elmira St Factory in 1958:



643 is on the left side in this photo

